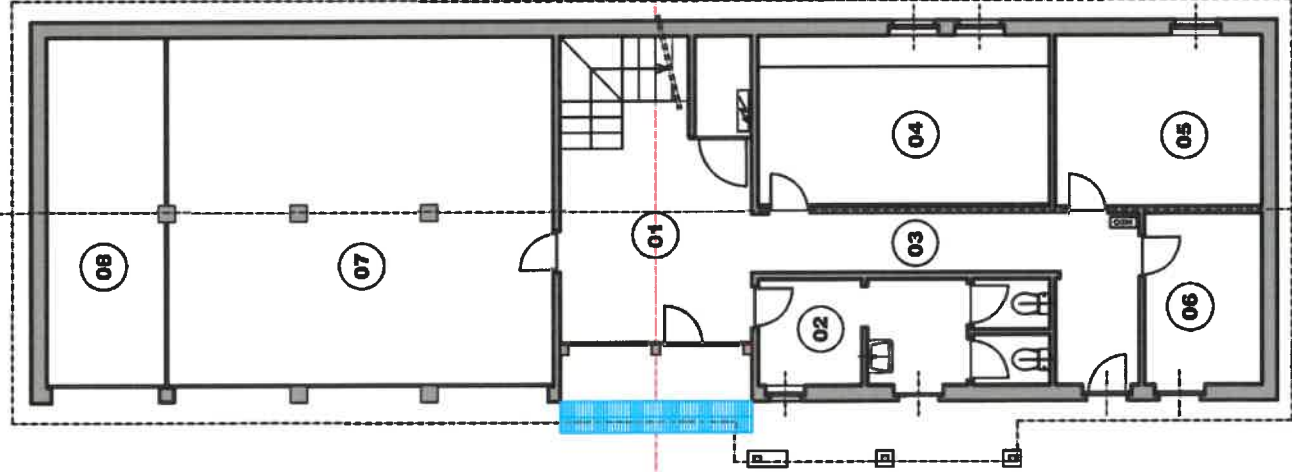
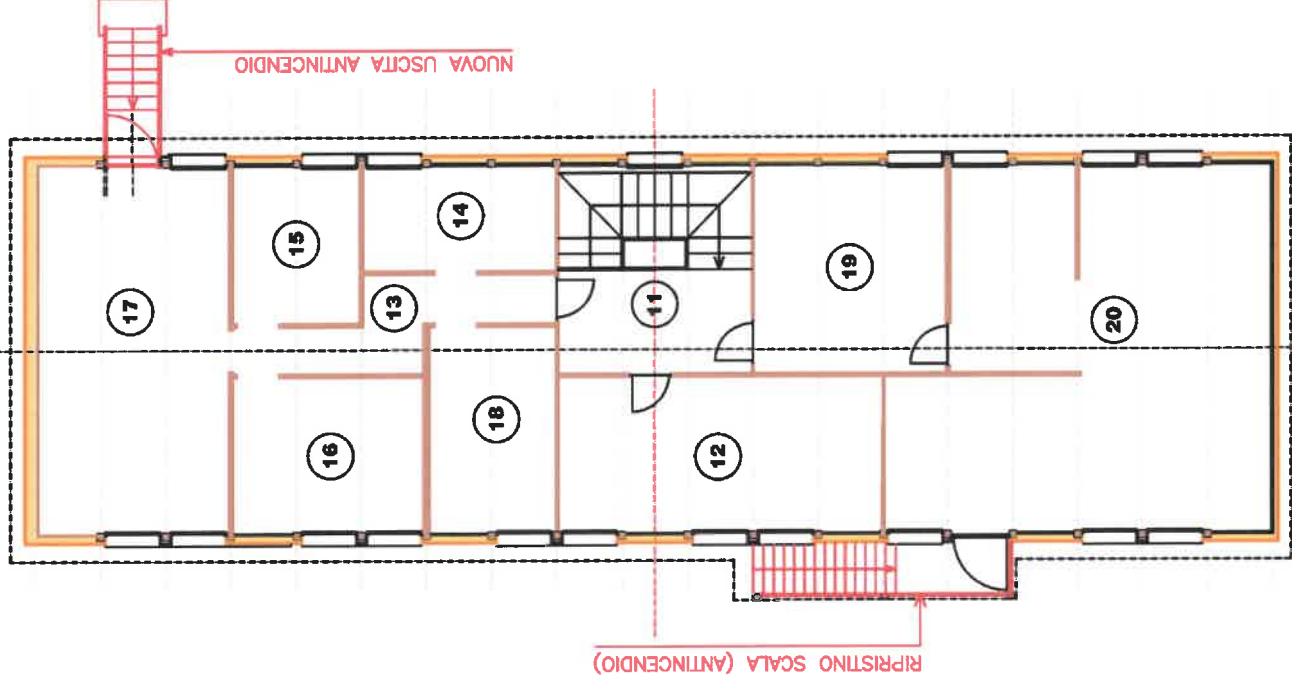


SEDE ESPLORATORI FAIDO BOLA - RILIEVO



PIANTA PIANO TERRENO



PIANTA 1. PIANO

LEGENDA:

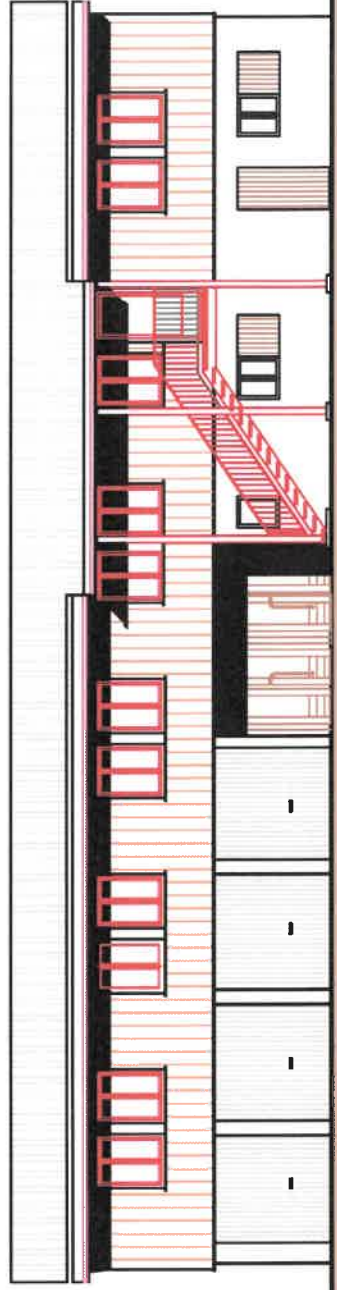
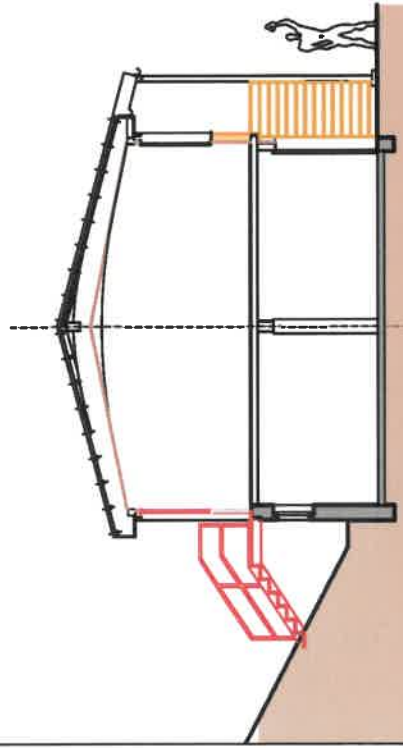
01	ATRIO ENTRATA	mq 22
02	WC-SERVIZI	mq 12
03	CORRIDOIO	mq 12
04	CUCINA	mq 19
05	DEPOSITO	mq 13
06	DEPOSITO	mq 6
07	DEPOSITO-GARAGE	mq 49
08	GARAGE (Comune)	mq 15
11	DISIMPEGNO	mq 8
12	LOCALE ATTIVITA	mq 19
13	CORRIDOIO	mq 7
14	LOCALE ATTIVITA	mq 7
15	LOCALE ATTIVITA	mq 7
16	LOCALE ATTIVITA	mq 11
17	LOCALE ATTIVITA	mq 26
18	LOCALE ATTIVITA	mq 9
19	LOCALE ATTIVITA	mq 15
20	LOCALE ATTIVITA	mq 47
		Totale mq 304



SEDE ESPLORATORI FAIDO BOLA - RILIEVO






UTC FAIDO
ARCH. C. CELIO 11.04.2024



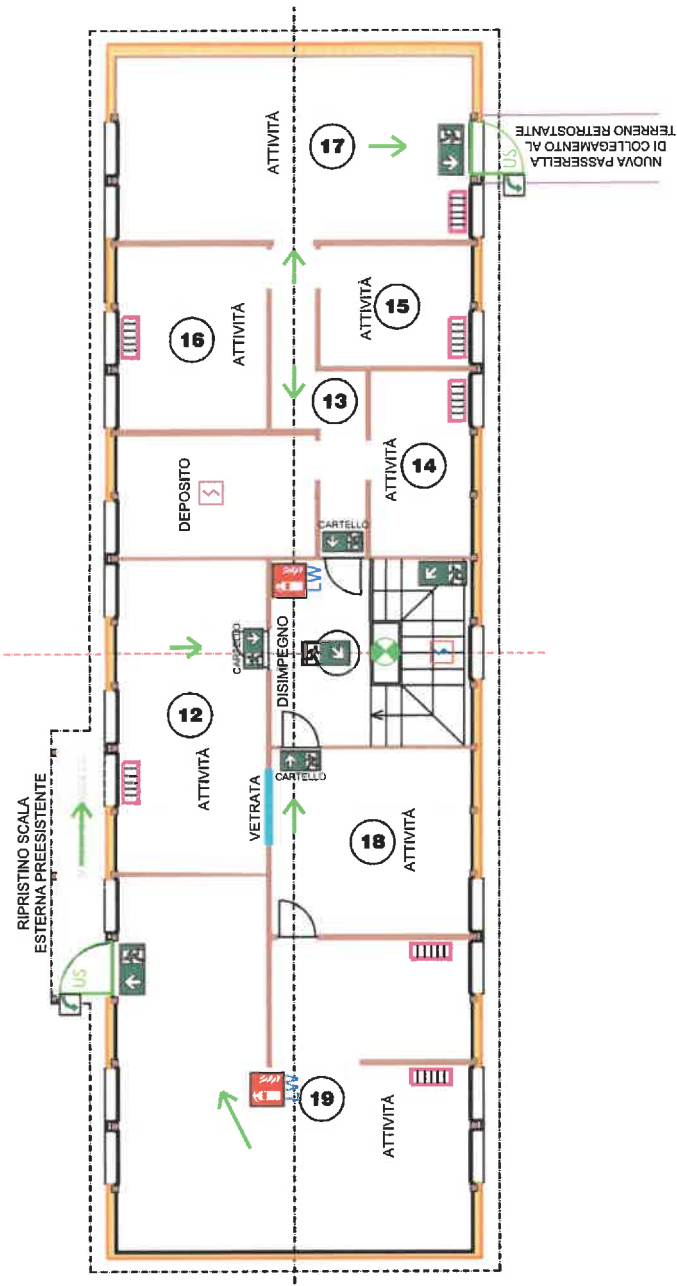


LEGENDA

-  Uscita di sicurezza
-  Direzione di fuga
-  Sblocco antipanico porta EN179
-  Indicazione di fuga con illuminaz. sic.
-  Illuminazione antipanico
-  Lampada portatile d'emergenza
-  Locale EI30-RF1
-  Porta tagliafuoco EI30
-  Porta tagliafuoco EI30-C con chiudiporta
-  Impianti elettrici
-  Coperta antincendio
-  Estintore portatile
-  Rivelatore di fumo con modulo radio
-  Stufetta elettrica da verificare
-  Cilindro pompieri
-  Punto di ritrovo



PIANTA PIANO TERRENO



PIANTA 1. PIANO